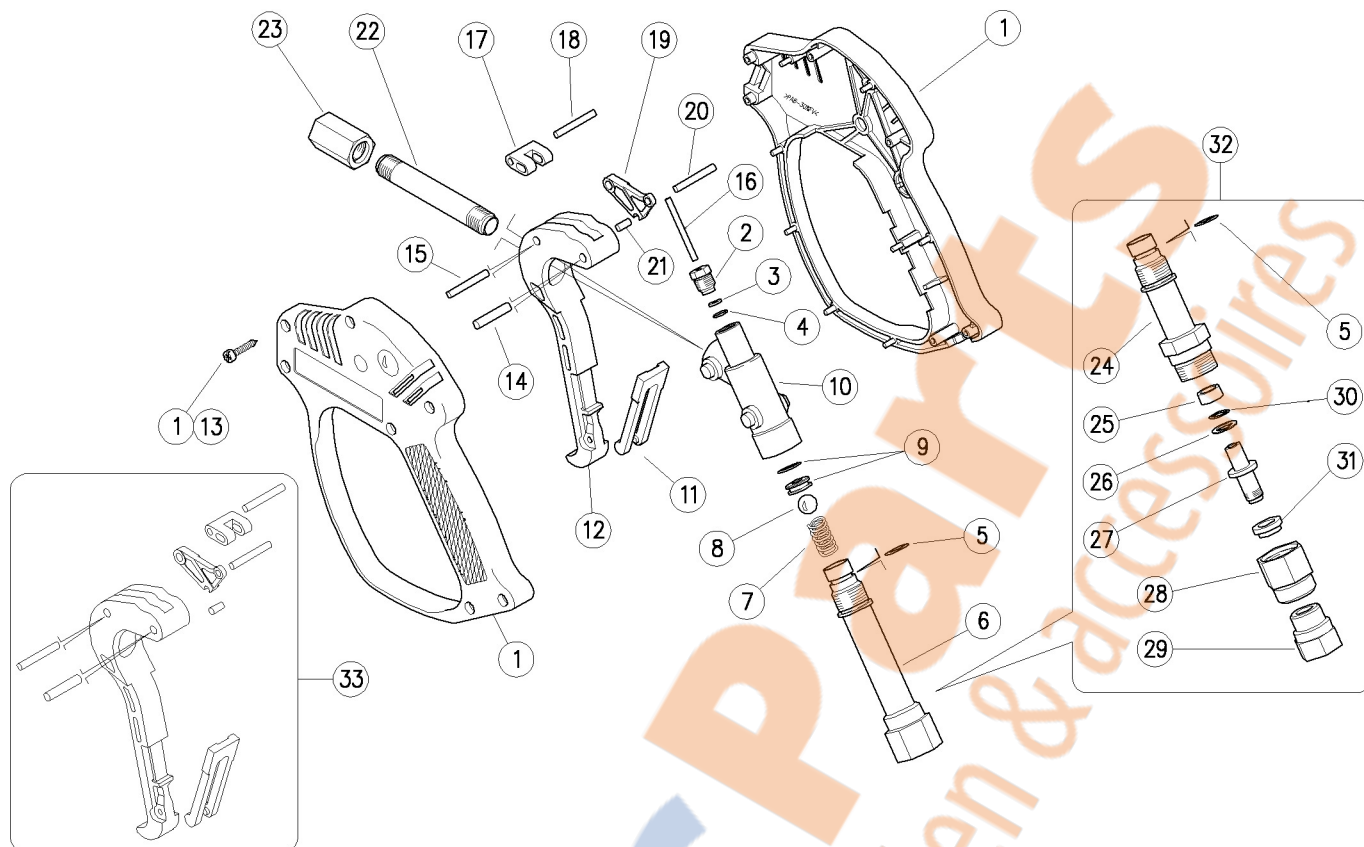


30.4500.10 RL56 spr.gun 3/8F-1/4F Bsp



Pos.	P/N	Description	Q.ty	K1	K2	K3	K4	Pos.	P/N	Description	Q.ty	K1	K2	K3	K4
1	30.4526.24	Casing-kit -RL56 +screws	1					18	30.4113.51R	Parallel pin, 4x29 mm Sst.	1				10
2	30.4115.31R	Front Plug, M10x1 brass	1					19	30.4124.84R	Connecting rod -RL51/56, PA black	1				10
3	10.4018.00R	Back-up ring, 3,2x7,5x1,2 mm	1	•	•			20	30.4112.51R	Parallel pin, 4x20 mm Sst.	1				10
4	10.3165.00R	O-ring, 2,62x2,84 mm Vi 70	1	•	•			21	30.4122.51R	Parallel pin, 4x13 mm Sst.	1				10
5	10.3060.01R	O-ring, 1,78x12,42 mm Ni 85	1	•	•			22	30.4110.56R	Front tube, 1/4Bsp MM 85mm Sst.	1				3
6	30.4106.35R	Inlet housing, 3/8F Bsp brass (1)	1					23	30.4508.31R	Outlet coupl., 1/4Bsp FF brass (1)	1				5
6	30.4119.35R	Inlet housing, 3/8F Npt brass	1					23	30.4509.31R	Outlet coupl., 1/4F Bsp-1/4F Npt brass	1				5
7	30.4108.51R	Spring, 1,6x8,8x24 mm Sst.	1					24	30.4521.31R	Swivel inlet housing, brass	1				3
8	14.7443.10R	Ball, 11/32" Sst.	1	•	•			25	26.1046.84R	Bushing, 10x14x7 mm Plast.	1	•			5
9	30.2014.20R	Seat, 6mm Sst.+O-ring 1,78mm	1	•	•			26	10.4010.01R	Back-up ring,10,2x13,9x1,2mm	1	•			50
10	30.4105.35R	Housing -RL51/56, brass	1					27	26.1041.51R	Pin, M12x1,25 Sst.	1				5
11	30.1510.84R	Safety latch, PA red	1					28	26.1042.51R	Ring nut, M22x1 Sst.	1				5
12	30.4127.84R	Trigger -RL51/56, PA black	1					29	30.4522.31R	Coupl., M12x1,25F-3/8F Bsp brass	1				3
13	16.3077.00RS	tapping screw, DIN7981 3,5x18 mm	7					30	10.3109.95R	O-ring, 2,4x9,3 mm Vi 70	1	•			25
14	30.4114.51R	Parallel pin, 5x33 mm Sst.	1					31	26.1045.84R	Bushing, 12x20x6 mm Plast.	1	•			5
15	30.4121.51R	Parallel pin, 5x22 mm Sst.	1					32	30.4525.24	Tube+sw. -RL55-6, 3/8F Bsp	1				3
16	30.4109.51R	Piston, 3x37,6 mm Sst.	1	•	•			33	30.4512.24	Trigger+pin kit -RL55-56	1				1
17	30.4104.84R	Connecting rod , PA black	1												

Kit	P/N	Description	Q.ty
K1	30.4504.24	Spares kit -RL55/6, 7x1pcs.	1
K2	30.4524.24	Repair kit -RL55-6+sw, 11x1pcs.	1

(1) 30.4500.10